

Thank you for purchasing a
MelMarie hair piece.
We hope that you love it as
much as we do!

Here are a few simple steps on
how to care for your MelMarie
hair piece and keep it at its
best.

Enjoy your instant big hair!

love,

Imelda x



MelMarie

luxury
weaves
and
ponytails



Remove from packaging and gently brush through using a paddle brush. This will make your hair piece appear more natural and easier to blend with your own hair.

After wearing remove and brush through with a paddle brush starting at the bottom working through to the top. Place it back in your MelMarie box until next use.

(I know after a night out it is very tempting to go straight to bed with your hairpiece in but it will tangle and reduce the longevity of your hairpiece.

So, TAKE IT OUT!

You can always brush through in the morning)



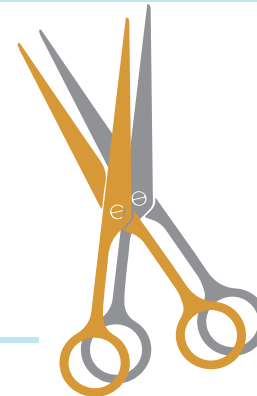
You can not dye your hair piece.



We don't recommend washing as the hairpiece is synthetic however if you must we advise using warm water and a small amount of conditioner brushing the hair downwards during rinsing. Follow this by blow drying on a very low heat smoothing with a large round brush.

(Please note: Washing your hairpiece is at your own risk!)

You can cut your hair piece to your desired length.



Using heat on your hairpiece – We recommend only using heated tools with a temperature of 160 degrees and under. Run the heated appliance through the hair quickly and roll into a pin curl and clip up. Leave the hair to cool and remove the clips to achieve your desired curl.



attention snapchat queens

We love to see snaps of customers wearing their MelMarie!
Feel free to tag or send us your MelMarie selfies.

